




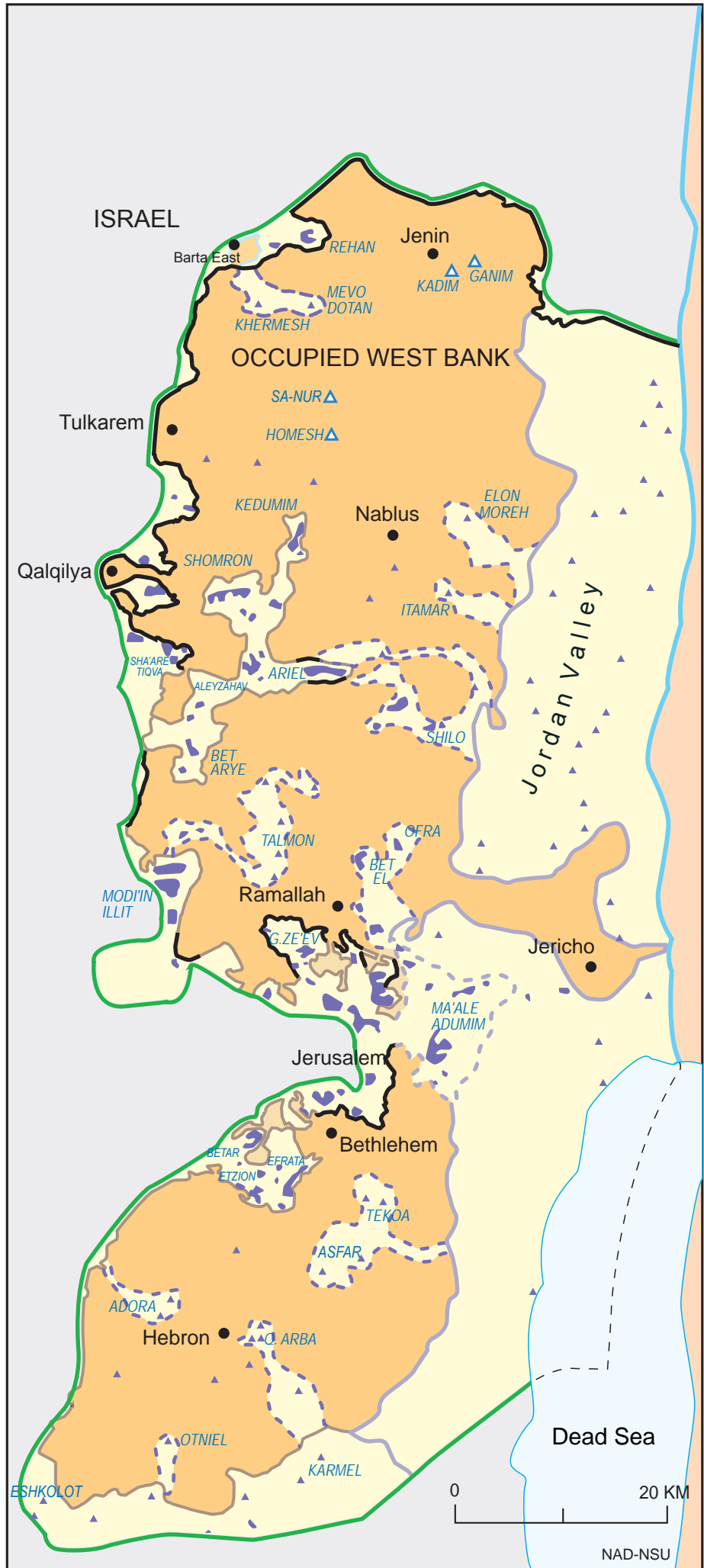


# ISRAEL'S WALL: ANOTHER LAND GRAB

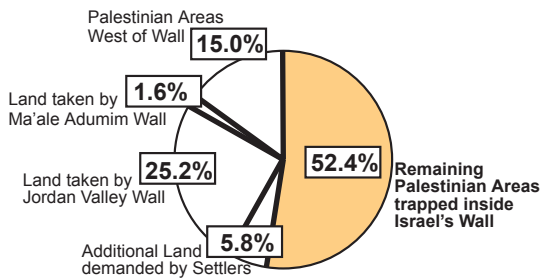
## SEPTEMBER 2004

-  Green Line (1967 Pre-Occupation Border) (approximately 320 km)
-  Israel's Wall (completed or under construction as of September 2004)
-  Israel's Wall as approved by Israeli Government (June 30, 2004) (652 km) [www.seamzone.mod.gov.il/Pages/ENG/route.htm](http://www.seamzone.mod.gov.il/Pages/ENG/route.htm)
-  Projected Israeli Wall based on Israeli Army Descriptions (132km)
-  Ma'ale Adumim Wall proposed by Israeli Army (48km)
-  Projected Israeli Wall demanded by Settler Organizations
-  Expected Rerouting of Israel's Wall according to Israeli Military Orders (Barta East)
-  Palestinian Jerusalem Villages to be entirely surrounded by approved Israeli Wall
-  Israeli Colony (Settlement)
-  Colony (Settlement) Proposed to be Evacuated by Israel (Ganim, Kadim, Homesh and Sa-Nur include a total of 475 settlers or 0.12% of the settler population)
-  Occupied Palestinian Territory *de facto* Annexed into Israel



### West Bank Land Areas Upon Wall Completion

(percentage of West Bank Land taken by Israel's Wall)



### UPON COMPLETION OF THE WALL

Occupied West Bank & Occupied Gaza Strip:  
22% of Historic Palestine

Total West Bank Area Remaining for Palestinians:  
12% of Historic Palestine

Palestinians Trapped between the Wall and Green Line: 249,000

Palestinians Separated from Cultivated Lands by the Wall: 329,000

Total Projected Length of the Wall: 832 km



NAD-NSU